

» Swing Phase Lock (SPL) 2

Orthotic Joint

Supplier:

Fillauer LLC

Features & Benefits:

- Free flexion during swing phase
- Automatic locking prior to stance phase
- Closely mimics normal gait patterns
- Minimizes energy consumption
- Can be used with unilateral or bilateral uprights
- Eliminates circumduction vaulting
- 3 modes of control
- Easy fabrication and maintenance

Specifications:

- Modes of operation: *Automatic lock/unlock, unlock sitting, free motion or manual lock*
- Flexion angle: 151°
- Mechanical security stops at 15 and 32 degrees
- Teflon bushings
- PEEK high wear insert and extended wear bumper

Indications:

- Post-Polio
- Spinal involvement
- Cerebral vascular accident
- Peripheral paresis/paralysis
- Nerve inflammations
- Neurological failures
- Myopathies
- Multiple Sclerosis (or similar diseases)

Contraindications:

- Knee flexion contracture greater than 10°
- Central paresis/paralysis
- Hip flexion contracture
- Weight bearing orthotic applications

Call Points:

- Orthotist
- Orthotic technician

Warranty:

- 12 months from date of shipment, against manufacturers defects

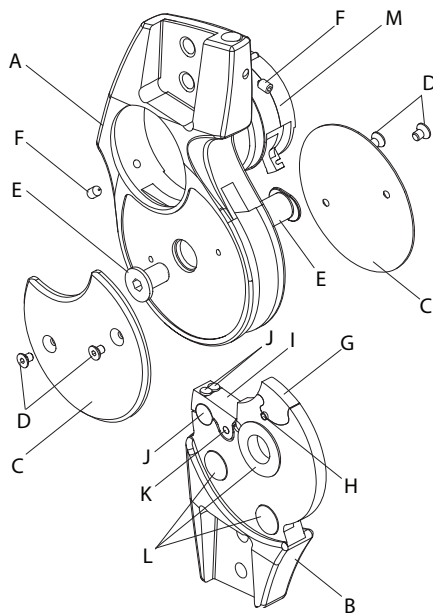


Item No.	Description	Side	Flexion angle
DF-IQ200L	IQ Swing Phase Lock kit	Left	151°
DF-IQ200R	IQ Swing Phase Lock kit	Right	151°
DF-IQ050L	IQ single sided Swing Phase Lock	Left	151°
DF-IQ050R	IQ single sided Swing Phase Lock	Right	151°

Swing Phase Lock (SPL) 2 » Fillauer LLC

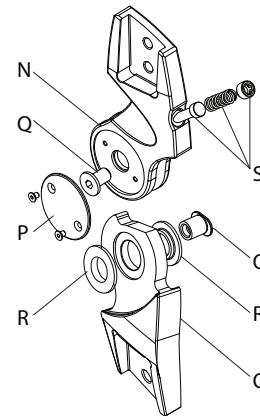
Item No.	Description	Side
Kit Components		
* DF-IQ210L	IQ Swing Phase Lock joint	Left
* DF-IQ210R	IQ Swing Phase Lock joint	Right
** DF-IQ120L	IQ Swing Phase Control joint	Left
** DF-IQ120R	IQ Swing Phase Control joint	Right
† DF-IQ140	IQ SPL satellite (remote control)	

Swing Phase Lock Joint » Parts (*)

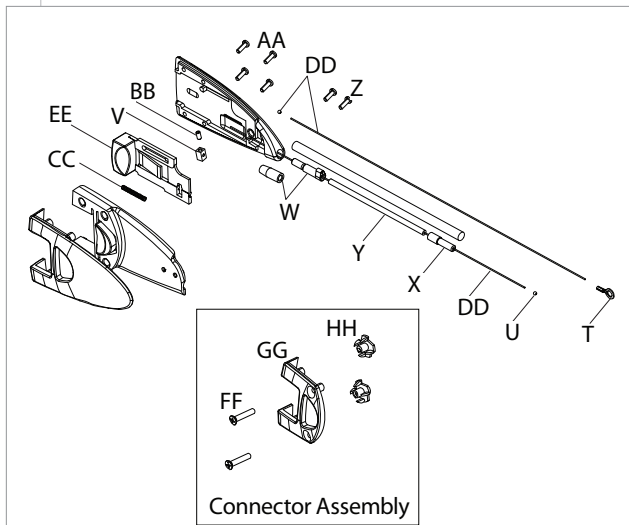


Item No.	Description
A DF-IQ110L/01	IQ SPL joint upper section – Left
A DF-IQ110R/01	IQ SPL joint upper section – Right
B DF-IQ110L/02	IQ SPL joint lower section – Left
B DF-IQ110R/02	IQ SPL joint lower section – Right
C DF-IQ110/03	Locking bar spring
D DF-IQ110/03/01	IQ screws for joint cover
E DF-IQ110/04	IQ joint screw and nut SPL
F DF-IQ110/05	IQ set screw cone point SPL
G DF-IQ110/06	IQ insert kit SPL
H DF-IQ110/06/01	IQ springpin SPL insert
I DF-IQ110/07	IQ bumper kit SPL
J DF-IQ110/07/01	IQ bumpers SPL
K DF-IQ110/07/02	IQ springpin for bumper kit
L DF-IQ110/08	IQ bearing kit SPL
M DF-IQ130L	IQ SPL function unit – Left
M DF-IQ130R	IQ SPL function unit – Right

Swing Phase Control Joint » Parts ()**



Item No.	Description
N DF-IQ120L/01	IQ SPC joint upper section – Left
N DF-IQ120R/01	IQ SPC joint upper section – Right
O DF-IQ120L/02	IQ SPC joint lower section – Left
O DF-IQ120R/02	IQ SPC joint lower section – Right
P DF-IQ120/03	IQ joint cover kit SPC
Q DF-IQ120/04	Joint screw and nut SPC
R DF-IQ120/08	IQ bumper kit SPC
S DF-IQ120/09	IQ flexion control SPC

Swing Phase Lock Satellite » Parts (†)


Item No.	Description
T	DF-IQ140L/01 IQ satellite cable connector
U	DF-IQ140R/02 IQ satellite cable end bullet
V	DF-IQ140L/04 IQ satellite cable end block
W	DF-IQ140/05 IQ satellite coupling kit (includes:)
	DF-IQ140/05/01 IQ satellite coupling cable nut
	DF-IQ140/05/02 IQ satellite coupling bushing
X	DF-IQ140/06 IQ satellite coupling nut SPL
Y	DF-IQ140/08 IQ satellite outer cable
Z	DF-IQ140/10 5x6 IQ satellite screw (2 each)
AA	DF-IQ140/11 5x8 IQ satellite screw (4 each)
BB	DF-IQ140/12 IQ satellite crater set screw
CC	DF-IQ140/14 IQ satellite spring
DD	DF-IQ140/15 IQ satellite pull relieve cable with end bullet
EE	DF-IQ140/20 IQ satellite slide lever
<i>IQ SPL Satellite Connector Assembly (alternate attachment)</i>	
FF	DF-IQ110/08 M3x25 screws (2 each)
GG	DF-IQ130L Orthosis connector
HH	DF-IQ130R Latch pin knob (T-nut)

Swing Phase Lock 2 » Accessories

Item No.	Description	Size	Material
DF-IQ150	SPL alignment kit		
DF-029840	SPL lamination dummy kit		
DF-029850	SPL auxiliary mounting bracket		Aluminum
DF-885859	SPL hex driver	1.25mm	
DF-023516	Swing Lock upright kit (includes:)	3/16 x 3/4	Aluminum
DF-023514	SPL lower left bar	3/16 x 3/4	Aluminum
DF-023513	SPL lower right bar	3/16 x 3/4	Aluminum
DF-023515	SPL upper bar	3/16 x 3/4	Aluminum
DF-882509	SPL bar screws (8 each)	M5x.8x10mm	Stainless Steel
DF-023616	Swing Lock upright kit (includes:)	3/16 x 3/4	Stainless Steel
DF-023614	SPL lower left bar	3/16 x 3/4	Stainless Steel
DF-023613	SPL lower right bar	3/16 x 3/4	Stainless Steel
DF-023615	SPL upper bar	3/16 x 3/4	Stainless Steel
DF-882509	SPL bar screws (8 each)	M5x.8x10mm	Stainless Steel
DF-076630	PolyCar-C™ insert (pair)	.060 (Sml)	Composite
DF-076632	PolyCar-C™ insert (pair)	.090 (Med)	Composite
DF-076634	PolyCar-C™ insert (pair)	.090 (Lrg)	Composite
DF-076636	PolyCar-C™ insert (pair)	.125 (XL)	Composite
DF-020803	Pre-cut PolyCar-C™	Large	Composite
DF-076356	Carbon composite bands (1 1/4" wide)	8" length	Carbon Comp.
DF-076364	Carbon composite bands (1 1/4" wide)	9" length	Carbon Comp.
DF-076372	Carbon composite bands (1 1/4" wide)	10" length	Carbon Comp.
DF-076398	Carbon composite bands (1 1/2" wide)	8" length	Carbon Comp.
DF-076521	Carbon composite bands (1 1/2" wide)	9" length	Carbon Comp.
DF-076406	Carbon composite bands (1 1/2" wide)	10" length	Carbon Comp.
DF-076414	Carbon composite bands (1 1/2" wide)	11" length	Carbon Comp.
DF-076422	Carbon composite bands (1 1/2" wide)	12" length	Carbon Comp.
DF-076430	Carbon composite bands (1 1/2" wide)	13" length	Carbon Comp.
DF-076448	Carbon composite bands (2" wide)	8" length	Carbon Comp.
DF-076455	Carbon composite bands (2" wide)	9" length	Carbon Comp.
DF-076463	Carbon composite bands (2" wide)	10" length	Carbon Comp.
DF-076471	Carbon composite bands (2" wide)	11" length	Carbon Comp.
DF-076489	Carbon composite bands (2" wide)	12" length	Carbon Comp.
DF-076497	Carbon composite bands (2" wide)	13" length	Carbon Comp.
DF-076505	Carbon composite bands (2" wide)	14" length	Carbon Comp.
DF-076513	Carbon composite bands (2" wide)	15" length	Carbon Comp.
DF-020882	Double action ankle joint	Large	Stainless Steel
DF-020884	Double action ankle joint w/pos. pins	Large	Stainless Steel
DF-020099	1 1/8" head insert stirrup (limited)	2 5/16"	Stainless Steel
DF-020115	1 1/8" head insert stirrup (limited)	2 3/4"	Stainless Steel
DF-020123	1 1/8" head insert stirrup (toe lift)	2 5/16"	Stainless Steel
DF-020149	1 1/8" head insert stirrup (toe lift)	2 3/4"	Stainless Steel
DF-020094	1 1/8" head insert stirrup (double act.)	2 3/4"	Stainless Steel
DF-020016	1 1/8" head offset stirrup (limited)	2 1/4" x 3/8"	Stainless Steel
DF-020024	1 1/8" head offset stirrup (limited)	2 1/4" x 1/2"	Stainless Steel
DF-020032	1 1/8" head offset stirrup (limited)	2 1/2" x 3/8"	Stainless Steel
DF-020040	1 1/8" head offset stirrup (limited)	2 1/2" x 1/2"	Stainless Steel
DF-020057	1 1/8" head offset stirrup (toe lift)	2 1/4" x 3/8"	Stainless Steel
DF-020065	1 1/8" head offset stirrup (toe lift)	2 1/4" x 1/2"	Stainless Steel
DF-020073	1 1/8" head offset stirrup (toe lift)	2 1/2" x 3/8"	Stainless Steel
DF-020081	1 1/8" head offset stirrup (toe lift)	2 1/2" x 1/2"	Stainless Steel