

## » FM Quick Change Wrist

### Prosthetic Wrist

#### Supplier:

Hosmer Dorrance Corporation (Fillauer)

#### Features & Benefits:

- Designed for quick change of terminal device or its position
- Light pressure on button unlocks wrist and permits free rotation of hook or hand
- Heavier pressure on button allows terminal device to be detached from wrist
- Pressure on end of terminal device will re-set and lock it into position
- Laminating ring version available

#### Specifications:

- Types: *Standard Aluminum, with Laminating Ring or Standard Stainless steel*
- Materials: *Aluminum or Stainless Steel*
- Diameter: *5.1cm (2")*
- Weight: *Aluminum = 92g (3.25oz)*  
*Laminating Ring = 116.2g (4.1oz)*  
*Stainless steel = 170g (6oz)*
- Threads: *Standard 1/2-20 and M12 x 1.5mm*

#### Indications:

- Transradial and transhumeral amputations

#### Call Points:

- Prosthetist
- Prosthetic technician

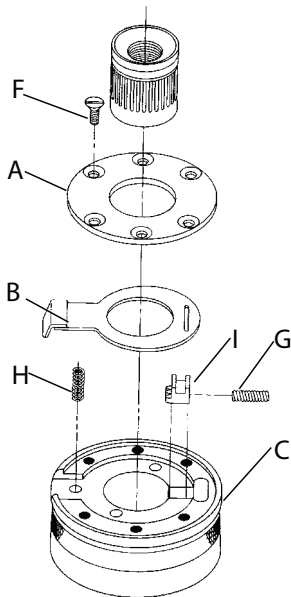
#### Warranty:

- 18 months, against manufacturers defects



With Laminating Ring

Item No.	Model	Description	Material	Thread	Diameter	Weight
HD-51043	FM-100	Quick changing wrist	Aluminum	Standard 1/2-20	5.1cm (2")	92g (3.25oz)
HD-58297	FM-100LR	Quick changing wrist w/ laminating ring		Standard 1/2-20	5.1cm (2")	116.2g (4.1oz)
HD-51044	FM-100S	Quick changing wrist	Stainless steel	Standard 1/2-20	5.1cm (2")	170g (6oz)

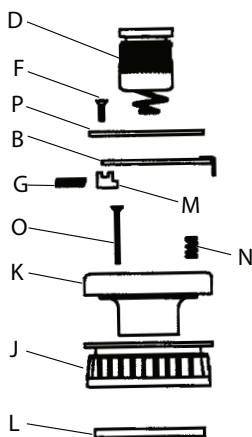


### FM Quick Change Wrist » Parts

Item No.	Description	For Model
A	HD-51045 Face Plate	FM-100 & FM-100S
B	HD-51046 Yoke	
C	HD-51049 Body	FM-100
C	HD-51051 Body	FM-100S
D**	HD-51052 Insert, standard 1/2-20 thread	
D	HD-58229 Insert, M12 x 1.5mm thread	
E	HD-51055 Insert spring (for HD-51052)	FM-100 & FM-100S
F	HD-51057 #4-40 Screw (6 each)	
G	HD-51058 Spring	
H	HD-51059 Spring	FM-100 & FM-100S
I	HD-51060 Gear rack	FM-100 & FM-100S

\*\* FM-100 and FM-100SS comes with standard 1/2-20 thread insert

### FM Quick Change Wrist w/ Laminating Ring » Parts



Item No.	Description	For Model
J	HD-59522 Laminating ring	FM-100LR
K	HD-58299 Body	FM-100LR
L	HD-58287 Nut plate	FM-100LR
M	HD-51060 Gear rack	FM-100LR
D**	HD-51052 Insert, standard 1/2-20 thread	
D	HD-58229 Insert, M12 x 1.5mm thread	
B	HD-51046 Yoke	
N	HD-51059 Spring	FM-100LR
O	HD-58283 #4-40 Screw (4 each)	FM-100LR
P	HD-51045 Face Plate	FM-100LR
F	HD-51057 #4-40 Screw (6 each)	
G	HD-51058 Spring	
*	HD-58305 Body assembly (w/ laminating ring)	FM-100LR

\* See picture on front

\*\* FM-100 and FM-100SS comes with standard 1/2-20 thread insert