

» Leak-Rate Total Contact Valve

Valve

Supplier:

Hosmer Dorrance Corporation (Fillauer)

Features & Benefits:

- Controlled rate of airflow through valve when amputee stands or walks, allowing noiseless expulsion of air from socket
- Unique nylon ball-check provides one-way air flow adjustable by an external screw
- Once properly adjusted, no further adjustment is required

Specifications:

- Material: *Aluminum*
- Sizes: *Short and Long*
- Diameter: *3.2cm (1¼")*
- Lengths: *Short= 1.3cm (½")*
Long= 2.5cm (1")

Indications:

- Transfemoral valve

Call Points:

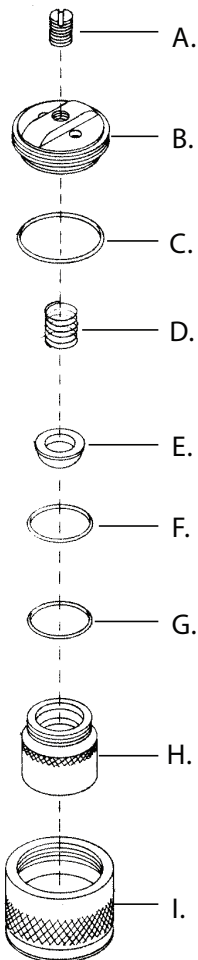
- Prosthetist
- Prosthetic technician

Warranty:

- 24 months, against manufacturers defects



Item No.	Model	Description	Size	Material	Length	Diameter
HD-51981	TCV-400L	Lamination valve	Long	Aluminum	2.5cm (1")	3.2cm (1¼")
HD-51982	TCV-400S	Lamination valve	Short	Aluminum	1.3cm (½")	3.2cm (1¼")
HD-52001	TCV-450L	Insert for TCV-400L	—	Aluminum		
HD-52002	TCV-450S	Insert for TCV-400S	—	Aluminum		



Leak-Rate Total Contact Valve » Parts

	Item No.	Description	For Model
A	HD-51986	Set screw	
B	HD-51985	Insert	
C	HD-51939	O-ring	
D	HD-51989	Spring	
E	HD-52000	Ball	
F	HD-59316	O-ring	
G	HD-51947	O-ring	
H	HD-51987	Ball seat	TCV-400L
H	HD-51988	Ball seat	TCV-400S
I	HD-51983	Body	TCV-400L
I	HD-51984	Body	TCV-400S