

## » Quick Change Suction Valve

### Valve

#### Supplier:

Hosmer Dorrance Corporation (Fillauer)

#### Features & Benefits:

- One quarter turn allows valve insert to be instantly removed or locked into place and completely sealed
- Valve is very thin
- Choice of materials

#### Specifications:

- Materials: *Aluminum or Stainless steel*
- Size: *Standard*
- Diameter: *3.8cm (1½")*
- Length: *0.95cm (3⁄8")*

#### Indications:

- Transfemoral valve

#### Call Points:

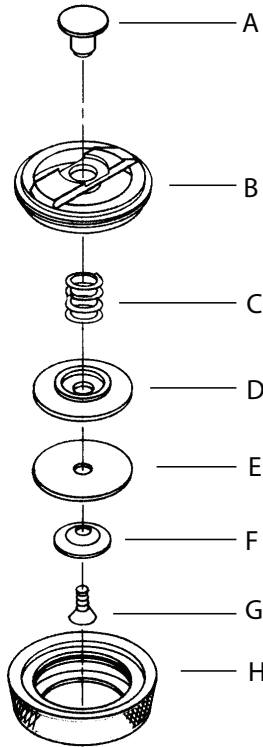
- Prosthetist
- Prosthetic technician

#### Warranty:

- 24 months, against manufacturers defects



Item No.	Model	Description	Size	Material	Length	Diameter
HD-51900	SV-100	Screw-in suction valve	Standard	Aluminum	0.95cm (3⁄8")	3.8cm (1½")
HD-51927	SV-100S	Screw-in suction valve	Standard	Stainless steel	0.95cm (3⁄8")	3.8cm (1½")
HD-51931	SV-150	Insert for SV-100	—	Aluminum		
HD-53982	SV-150S	Insert for SV-100S	—	Stainless steel		



**Quick Change Suction Valve » Parts**

	<b>Item No.</b>	<b>Description</b>	<b>For Model</b>
A	HD-51912	Stem	SV-100
A	HD-51913	Stem	SV-100S
B	HD-51910	Keeper	
C	HD-51916	Spring	
D	HD-51915	Plate	
E	HD-51925	Flapper	
F	HD-51919	Washer	
G	HD-51918	Screw	
H	HD-51908	Body	SV-100
H	HD-51909	Body	SV-100S