

» Quick Disconnect Wrist - USMC Style

Prosthetic Wrist

Supplier:

Hosmer Dorrance Corporation (Fillauer)

Features & Benefits:

- Same as USMC Disconnect Wrist
- Quick changes and pro/supination lock
- Light pressure indexes pro/supination
- Heavier pressure detaches terminal device completely
- Push to lock

Specifications:

- Material: *Aluminum*
- Types: *Round and Oval*
- Diameters: *Round = 4.4cm (1³/₄") and 5.1cm (2")*
Oval = 5.7cm x 4.1cm (2¹/₄" x 1⁵/₈")
and 5.1cm x 3.8cm (2 x 1¹/₂")
- Threads: *Standard 1/2-20 and M12 x 1.5mm*

Indications:

- Transradial and transhumeral amputations

Call Points:

- Prosthetist
- Prosthetic technician

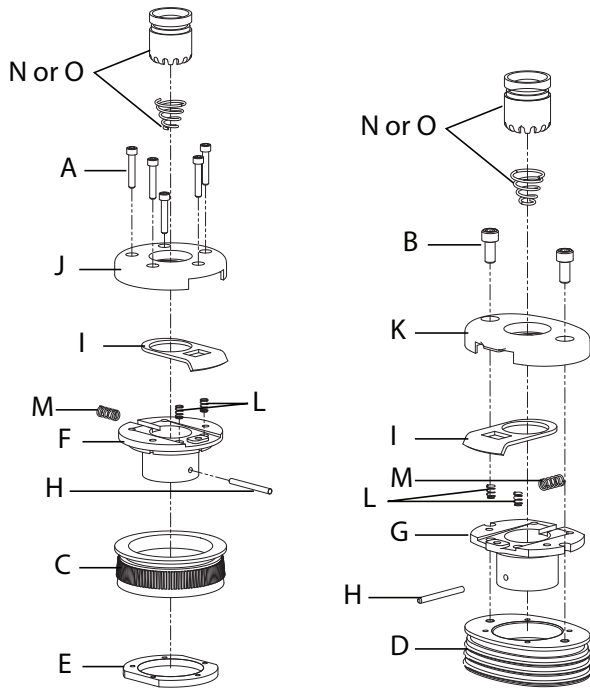
Warranty:

- 18 months, against manufacturers defects



Item No.	Shape	Description	Material	Thread	Diameter
HD-61862	Round	Quick disconnecting wrist	Aluminum	Standard 1/2-20	5.1cm (2")
HD-61863	Round	Quick disconnecting wrist	Aluminum	M12 x 1.5mm	5.1cm (2")
HD-61921	Oval	Quick disconnecting wrist	Aluminum	Standard 1/2-20	5.7cm x 4.1cm (2 ¹ / ₄ " x 1 ⁵ / ₈ ")
HD-61922	Oval	Quick disconnecting wrist	Aluminum	M12 x 1.5mm	5.7cm x 4.1cm (2 ¹ / ₄ " x 1 ⁵ / ₈ ")
HD-62342	Round	Quick disconnecting wrist	Aluminum	Standard 1/2-20	4.4cm (1 ³ / ₄ ")
HD-62343	Oval	Quick disconnecting wrist	Aluminum	Standard 1/2-20	5.1cm x 3.8cm (2" x 1 ¹ / ₂ ")
HD-62344	Oval	Quick disconnecting wrist, w/o insert	Aluminum	—	5.1cm x 3.8cm (2" x 1 ¹ / ₂ ")
HD-62345	Round	Quick disconnecting wrist, w/o insert	Aluminum	—	4.4cm (1 ³ / ₄ ")
HD-61860	Round	Quick Disconnect insert		Standard 1/2-20	
HD-61861	Round	Quick Disconnect insert		M12 x 1.5mm	

Quick Disconnect Wrist - USMC Style » Parts



Item No.	Description	For Model
A	HD-58286 #4-40 x 5/8 socket head screw (5 each)	Round 2"
A	HD-62513 #4-40 x 3/8 flat head screw (4 each)	Round 1 3/4"
B	HD-51019 #8-32 x 3/8 socket head screw (4 each)	Oval 2 1/4 x 1 5/8"
B	HD-52338 #4-40 x 3/8 flat head screw (2 each)	Oval 2 x 1 1/2"
C	HD-59522 Laminating ring body	Round 2"
C	HD-59523 Laminating ring body	Round 1 3/4"
D	HD-62357 Laminating ring body	Oval 2 x 1 1/2"
D	HD-59526 Laminating ring body	Oval 2 1/4 x 1 5/8"
E	HD-61865 Nut plate, 5-hole	Round 2"
F	HD-61866 Wrist body	Round 2"
F	HD-62348 Wrist body	Round 1 3/4"
G	HD-62346 Wrist body	Oval 2 x 1 1/2"
G	HD-61918 Wrist body	Oval 2 1/4 x 1 5/8"
H	HD-61852 Pin dowel, 0.094 x 1"	
I	HD-61853 Release button	Round 2", Oval 2 1/4 x 1 5/8"
I	HD-62349 Release button	Round 1 3/4"
I	HD-62346 Release button	Oval 2 x 1 1/2"
J	HD-61854 Wrist cover	Round 2"
J	HD-62350 Wrist cover	Round 1 3/4"
K	HD-62347 Wrist cover	Oval 2 x 1 1/2"
K	HD-61919 Wrist cover	Oval 2 1/4 x 1 5/8"
L	HD-61856 Compression spring, 0.010	
M	HD-61857 Compression spring, 0.026	
N	HD-61860 Quick Disconnect insert, 1/2-20	
O	HD-61861 Quick Disconnect insert, M12 x 1.5mm	