

## » Screw-In Suction Valve

### Valve

#### Supplier:

Hosmer Dorrance Corporation (Fillauer)

#### Features & Benefits:

- Thin, aluminum suction valve
- Commonly used in conventional above knee sockets

#### Specifications:

- Material: *Aluminum*
- Sizes: *Small, Standard and Large*
- Diameters: *Small= 2.9cm (1 1/8")*  
*Standard= 3.5cm (1 3/8")*  
*Large= 3.8cm (1 1/2")*
- Length: *0.95cm (3/8")*

#### Indications:

- Transfemoral valve

#### Call Points:

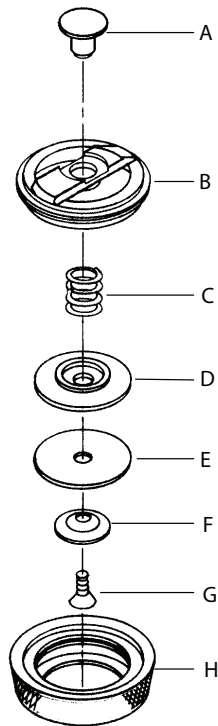
- Prosthetist
- Prosthetic technician

#### Warranty:

- 24 months, against manufacturers defects



Item No.	Model	Description	Size	Material	Length	Diameter
HD-51900	SV-75	Screw-in suction valve	Small	Aluminum	0.95cm (3/8")	2.9cm (1 1/8")
HD-51927	SV-300	Screw-in suction valve	Standard	Aluminum	0.95cm (3/8")	3.5cm (1 3/8")
HD-51922	SV-200	Screw-in suction valve	Large	Aluminum	0.95cm (3/8")	3.8cm (1 1/2")
HD-51931	SV-350	Insert for SV-300	—	Aluminum		
HD-53982	SV-250	Insert for SV-200	—	Aluminum		



**Screw-In Suction Valve » Parts**

	<b>Item No.</b>	<b>Description</b>	<b>For Model</b>
A	HD-51912	Stem	
B	HD-51902	Keeper	SV-75
B	HD-51929	Keeper	SV-300
B	HD-51924	Keeper	SV-200
C	HD-51916	Spring	
D	HD-51915	Plate	
E	HD-51925	Flapper	
F	HD-51919	Washer	
G	HD-51918	Screw	
H	HD-51901	Body	SV-75
H	HD-51928	Body	SV-300
H	HD-51923	Body	SV-200