

## » LIDO2® Cervical System

### Cervicothoracic Orthosis

**Supplier:**

Orthomerica Products, Inc.

**Features & Benefits:**

- Offers excellent anterior/posterior, mediolateral and rotational control
- Features cutout for breast clearance without compromising stability
- Click 'n' Close™ fasteners allow easy application and removal
- Coolfoam™ cushioning on the malleable aluminum chinpiece protects delicate skin against pressure sores and breakdown
- Adjustable and padded cranial component with head strap limits medial/lateral and rotational movement, when the chinpiece is removed for shaving or eating
- Unique contour of dual aluminum uprights allows easy access to wound site following both tracheotomy and anterior cervical fusion procedures
- Removable, washable Coolfoam™ liner actively wicks away moisture
- Can be combined with spinal jacket as a CTLSO

**Specifications:**

- Sizes: *Small, Medium and Large*
- Orthosis should be fitted properly to avoid skin ulcerations from occurring on patient
- Replacement liners/headstrap sets available

**Indications:**

- Cervical and upper thoracic immobilization (Below C1 vertebrae)
- Load reduction below C1 vertebrae

**Contraindications:**

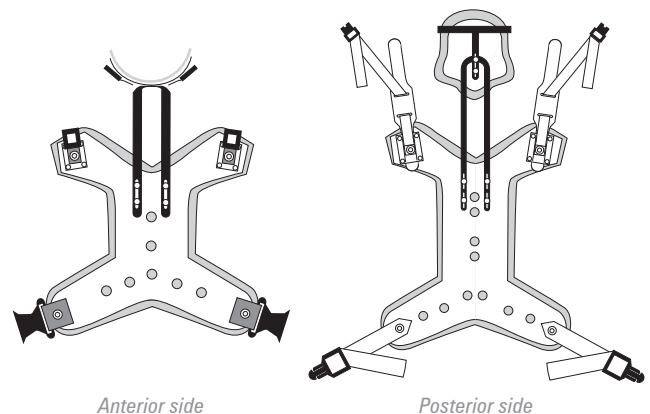
- Use by multiple patients

**Call Points:**

- Orthotist
- Physician
- Physiotherapist

**Warranty:**

- 90 days, against manufacturers defects



Item No.	Description	Size	Neck Circ.	Xiphoid Circ.	Sternum Notch to Pubis
OR-2540	Adjustable cervicothoracic orthosis	Small	25–30 cm (10"–12")	61–71 cm (24"–28")	43–51 cm (17"–20")
OR-2541	Adjustable cervicothoracic orthosis	Medium	28–46 cm (11"–18")	71–114 cm (28"–45")	51–68 cm (20"–27")
OR-2542	Adjustable cervicothoracic orthosis	Large	33–46 cm (13"–18")	96–114 cm (38"–45")	61–68 cm (24"–27")

### Replacement Liner/Headstrap Sets

OR-2540.01	LIDO2® liner and headstrap set	Small
OR-2541.01	LIDO2® liner and headstrap set	Medium
OR-2542.01	LIDO2® liner and headstrap set	Large