

» Icelock® Smooth 651

Lock

Supplier:

Ossur Americas

Features & Benefits:

- Extremely low build height and lightweight
- Very strong and durable
- Can be used with single or double lamination techniques
- Easy to service — removable from the inside of the socket
- Easily interchangeable — provides the amputee with the option of trying different suspension methods
- Reusable fabrication tools make the fabrication process very effective

Specifications:

- Types available: *Smooth lock without adapter*
- Weight limit: *With titanium adapter 672= 166kg (365lbs)*
With stainless steel adapter 673= 100kg (220lbs)
With alloy adapter 674= 100kg (220lbs)
With titanium adapter 675= 166kg (365lbs)
- Build height: *15mm (9/16")*
- Weight: *68g (2.4oz)*
- Activity level: *Up to High (K3)*

Indications:

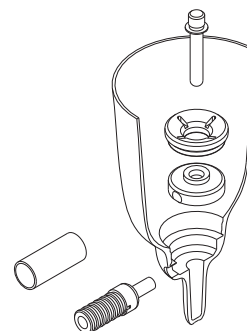
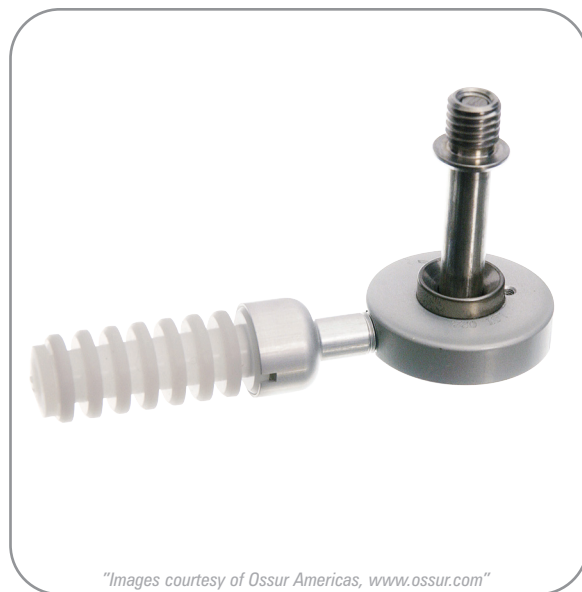
- For all amputation levels

Call Points:

- Prosthetist
- Prosthetic technician

Warranty:

- One year, against manufacturers defects



Icelock Smooth 651

Icelock® Smooth 651 » Ossur Americas

Item No.	Model	Description	Weight Limit	Build Height	Weight
OS-L-651000	651	Smooth lock <i>(without adapter)*</i>	—	15mm (9/16")	68g (2.4oz)

Adapters

OS-L-672000	672	Titanium pyramid	166kg (365lbs)	9mm (3/8")	76g (2.7oz)
OS-L-673000	673	Stainless steel pyramid	100kg (220lbs)	8mm (5/16")	64g (2.5oz)
OS-L-674000	674	Alloy 4-hole adapter	100kg (220lbs)	2mm (1/16")	34g (1.2oz)
OS-L-675000	675	Titanium 4-hole adapter	166kg (365lbs)	2mm (1/16")	54g (1.9oz)

Fabrication Tools

OS-L-680000	680	Reusable fabrication kit <i>(Must be purchased before first use of 651)</i>
OS-L-692016		Release key <i>(A tool to tighten and release the release unit)</i>

* Includes OS-L-693507 smooth pin

Parts

Item No.	Description
For Smooth	
OS-L-692022	Fabrication ring <i>(with o-ring and silicone ring)</i>
OS-L-692110	Funnel
OS-L-693507	Smooth pin, 53mm (2 1/16") length — standard
OS-L-693506	Smooth pin, 43mm (1 11/16") length — short
OS-L-693508	Smooth pin, 63mm (2 1/2") length — long
OS-L-693509	Smooth pin, 75mm (2 7/8") length — extra long
OS-L-693505	Smooth lock
OS-L-693504	Protective sleeve <i>(for push button)</i>
OS-L-692501	Release Unit
OS-L-693502	Push button
OS-L-693503	Dust cap
OS-L-693112	Silicone seal
For Fabrication Tools	
OS-L-692010	Lock dummy <i>(with O-ring)</i>
OS-L-693127	O-ring 8 x 2 <i>(for lock dummy)</i>
OS-L-692119	Steel guide
OS-L-692120	Standard release dummy
OS-L-692125	Long release dummy
OS-L-692130	Standard pin dummy
OS-L-692133	Short pin dummy
OS-L-693110	Pin dummy bolt <i>(with O-ring)</i>
OS-L-692015	Hex driver <i>(with O-ring)</i>
OS-L-692017	Cross driver <i>(with O-ring)</i>
OS-L-693126	O-ring 4 x 2 <i>(for hex and cross drivers)</i>